

Great Harvest Organics

2018 Seed Guide



OUR COMMITMENT

At Great Harvest Organics, our mission is simple. Help you achieve your goals by providing you with the best in seed quality, field performance, and service.

OUR TEAM



Scott Beck
President



Amy Clark
Administrative Assistant



Dave Ross
Sales and Operations Manager

GREAT HARVEST ORGANICS

Organic seed is a symbol of the independence and values that America was built upon. As an organic farmer, you value the independence gained by supplying organic feed, food, and fiber to a growing number of organic consumers. You also find value in the challenge of cultivating and preserving the richness of early, sustainable agricultural methods in today's modern world.

Product Selection

Researching and testing hybrids and varieties to select the best products for organic farmers is a fundamental part of our business. Seed products being grown for organic farmers have been specially selected to perform in organic conditions. Look to Great Harvest Organics to continue bringing new products and market premium potential to organic farmers.

Great Harvest Organics has access to a broad source of genetics from different suppliers. This allows us to test, select and offer a unique combination of products that work for organic farmers.



2018 ORGANIC CORN

Hybrid Brand	Relative Maturity	Heat Units	Drought Tolerance	Gray Leaf Spot	Northern Corn Leaf Blight	Stay Green	Stalk Strength	Root Strength	Test Weight	Emergence	Plant Height	Ear Type	Ear Height	Kernel Rows	GDUs to Mid-Silk
GHO 43A2	93	2330	9	8	7	8	8	7	9	8	Medium Tall	FG	Medium High	16-20	1210
GHO 47N2	97	2380	8	7	7	6	8	8	6	7	Medium Tall	FL	Medium High	14-18	1220
GHO 41M8	101	2440	8	8	9	7	8	9	6	7	Medium	D	Medium	16-18	1260
GHO 52F3	102	2440	9	7	8	7	8	7	8	7	Medium Tall	MF	Medium	14-18	1280
GHO 55G3	105	2520	8	6	8	7	8	8	8	6	Medium Short	MF	Medium Low	14-18	1330
GHO 55E4	105	2550	8	8	8	8	8	8	8	8	Medium Tall	MF	Medium High	14-18	1330
GHO 58E4	108	2640	8	9	7	8	8	8	7	6	Tall	MF	Medium High	14-18	1390
GHO 59R5	109	2630	8	8	7	8	8	9	9	8	Medium Tall	MF	Medium High	14-18	1340
GHO 62B3	112	2720	8	7	6	7	8	8	9	8	Tall	MF	Medium High	14-18	1360
GHO 63T1	112	2780	8	9	7	9	9	8	9	9	Medium Tall	FL	Medium	16-20	1400
GHO 75C6	115	2820	7	8	7	7	8	7	8	7	Medium Tall	MF	Medium	14-18	1420

■ = NEW Column Rating: 9 = Best MF = Medium Flex FG = Flex Girth FL = Flex Length D = Determinate

CERTIFIED ORGANIC SEED CORN

NEW GHO 43A2 RM: 93

43A2 combines excellent stress tolerance with top-end yield potential, making it a product to build your lineup around. The strong performance and excellent test weight of GHO 43A2 will make it a standout product on any farm.

SPECIAL CHARACTERISTICS

- Good Balance of Yield and Agronomics
- Incredible Girthy Ear
- Excellent Test Weight

NEW GHO 47N2 RM: 97

47N2 is a broadly adapted product that excels across all soil types with tremendous top-end yield and good overall stress tolerance. This product has incredible standability along with fast drydown. Experience the versatility of GHO 47N2.

SPECIAL CHARACTERISTICS

- Plot Topping Yields with Drydown
- Tremendous Roots and Stalks
- Excellent Stress Tolerance

GHO 41M8 RM: 101

41M8 is a consistent product that combines top-end yield with good overall stress tolerance. This versatile early product will handle all soil types and has excellent plant health. GHO 41M8 finishes the season with excellent drydown.

SPECIAL CHARACTERISTICS

- Broad Adaptation and Versatility
- Excellent Plant Health
- Season-Long Standability

NEW GHO 52F3
RM: 102

52F3 is a high-performing product in most soils, including water-limited environments. This product combines excellent roots and stalks with plant health and outstanding grain quality. Place GHO 52F3 on your acres and watch it perform.

SPECIAL CHARACTERISTICS

- Combines Yield with Stress Tolerance
- Superb Agronomics and Health
- Food-Grade Type Grain Quality

NEW GHO 55G3
RM: 105

55G3 sets the standard for consistency and stability. This moderate height hybrid has excellent grain quality and tremendous stress tolerance. GHO 55G3 will deliver excellent performance on the tough acres and the more productive acres.

SPECIAL CHARACTERISTICS

- Consistent Ears and Solid Agronomics
- Moderate Plant Height
- Excellent Test Weight

GHO 55E4
RM: 105

55E4 is a dominant performer. This product offers an excellent overall health package and strong performance in stressful conditions. Its overall yield performance is impressive.

SPECIAL CHARACTERISTICS

- Top-Performer
- Strong Roots and Excellent Stalks
- Handles Tough Conditions

GHO 58E4
RM: 108

58E4 is a dominant yielder in all geographies. The robust plant architecture makes it a dual purpose hybrid. Placed in medium and higher productive fields, GHO 58E4 will deliver unmatched top-end yields, excellent late season looks, and tremendous silage utility.

SPECIAL CHARACTERISTICS

- Impressive Top-End Potential
- Excellent Stalks and Roots
- Tremendous Silage Option

GHO 59R5
RM: 109

59R5 is widely adapted with good northern and southern movement. It's a perfect choice across all soil types. GHO 59R5 is an excellent combination of tremendous standability and outstanding grain quality.

SPECIAL CHARACTERISTICS

- Outstanding Grain Quality
- Tremendous Stalk Strength
- Fast Emergence and Early Growth

GHO 62B3
RM: 112

62B3 is a broadly adapted hybrid that will stand out for its food-grade type grain quality and ability to consistently fill the ear to the tip. GHO 62B3 has strong agronomics, excellent late season looks, and tremendous top-end yield potential.

SPECIAL CHARACTERISTICS

- Broad Adaptation with Strong Yield
- Good Plant Health Package
- Food-Grade Type Grain Quality

GHO 63T1
RM: 112

63T1 has the stress tolerance to outperform all others in tough conditions. The combination of emergence, seedling vigor, stalks, and roots is unmatched. With its outstanding drought tolerance, great test weight, and yield, this is a "must plant" for all organic farmers looking for this maturity.

SPECIAL CHARACTERISTICS

- Outstanding Drought Tolerance
- Excellent Stalks and Roots
- Industry-Leading Emergence

GHO 75C6
RM: 115

75C6 is a balanced product that combines good top-end yield with excellent plant health and agronomics. It delivers impressive ear length and girth with tremendous grain quality. Use GHO 75C6 with confidence in your medium to better soils.

SPECIAL CHARACTERISTICS

- Consistent Top-End Yielder
- Impressive Health Package
- Excellent Test Weight and Grain Quality

2018 NON-GMO CORN

Hybrid Brand	Relative Maturity	Heat Units	Drought Tolerance	Gray Leaf Spot	Northern Corn Leaf Blight	Stay Green	Stalk Strength	Root Strength	Test Weight	Emergence	Plant Height	Ear Type	Ear Height	Kernel Rows	GDUs to Mid-Silk
4323	93	2330	9	8	7	8	8	7	9	8	Medium Tall	FG	Medium High	16-20	1210
4721	97	2380	8	7	7	6	8	8	6	7	Medium Tall	FL	Medium High	14-18	1220
5234	102	2440	9	7	8	7	8	7	8	7	Medium Tall	MF	Medium	14-18	1280
5140	105	2550	8	8	8	8	8	8	8	8	Medium Tall	MF	Medium High	14-18	1330
5840	108	2640	8	9	7	8	8	8	7	6	Tall	MF	Medium High	14-18	1390
6225	112	2720	8	7	6	7	8	8	9	8	Tall	MF	Medium High	14-18	1360
6365	113	2790	6	7	8	8	8	8	7	8	Tall	FL	Medium High	16-20	1430

■ = NEW Column Rating: 9 = Best MF = Medium Flex FG = Flex Girth FL = Flex Length D = Determinate

NON-GMO SEED CORN

4323 RM: 93

4323 is a hybrid that has east to west utility across our northern geographies. This product combines stress tolerance with excellent top-end yield potential, making it a product to build your lineup around. The strong performance and excellent test weight of 4323 make it a standout product.

SPECIAL CHARACTERISTICS

- Good Balance of Yield and Agronomics
- Incredible Girthy Ear
- Excellent Test Weight

4721 RM: 97

4721 is a broadly adapted product that excels across all soil types with tremendous top-end yield and good overall stress tolerance. This product has incredible standability along with fast drydown. Experience the versatility of 4721.

SPECIAL CHARACTERISTICS

- Plot Topping Yields with Drydown
- Tremendous Roots and Stalks
- Excellent Stress Tolerance

5234 RM: 102

5234 is a tremendous product for most soils in northern geographies. This product combines excellent roots and stalks with plant health and outstanding grain quality. Place 5234 on your acres and watch it perform!

SPECIAL CHARACTERISTICS

- Combines Yield with Stress Tolerance
- Superb Agronomics and Health
- Food-Grade Type Grain Quality

5140
RM: 105

5140 is a dominant performer. This product offers an excellent overall health package and strong performance in stressful conditions. Its overall yield is impressive.

SPECIAL CHARACTERISTICS

- Top Performer in Eastern Markets
- Strong Roots and Excellent Stalks
- Handles Tough Conditions

5840
RM: 108

5840 is a dominant yielder. The robust plant architecture of this hybrid gives it the ability to be an outstanding dual purpose hybrid. Placed in the medium and higher productive fields, 5840 will deliver unmatched top-end yields with excellent late season looks and tremendous silage utility.

SPECIAL CHARACTERISTICS

- Impressive Top-End Yield Potential
- Excellent Stalks and Roots
- Tremendous Silage Option

6225
RM: 112

6225 is an exciting hybrid and a dominant yielder. 6225 is a broadly adapted hybrid that will stand out for its food-grade grain quality and its ability to consistently fill the ear to the tip.

SPECIAL CHARACTERISTICS

- Broad Adaptation with Strong Yield
- Good Plant Health Package
- Food-Grade Type Grain Quality

NEW 6365
RM: 113

6365 is designed for the highest productivity areas of your farm and delivers unmatched, top-end yield potential along with an excellent root system. This yield leader has a strong plant health package and is suitable for corn after corn. Plant 6365 and reach new yield levels.

SPECIAL CHARACTERISTICS

- Top-End Yield Potential
- Tremendous Root Strength
- Excellent Corn after Corn

**BIOLOGICAL
CORN SEED
TREATMENT**

**Now standard on
all corn seed from
Great Harvest
Organics.**

A new biological seed treatment is now standard on all Great Harvest Organics corn seed. This treatment is OMRI approved and is a known bio-stimulant and bio-catalyst for young plants.

BENEFITS INCLUDE:

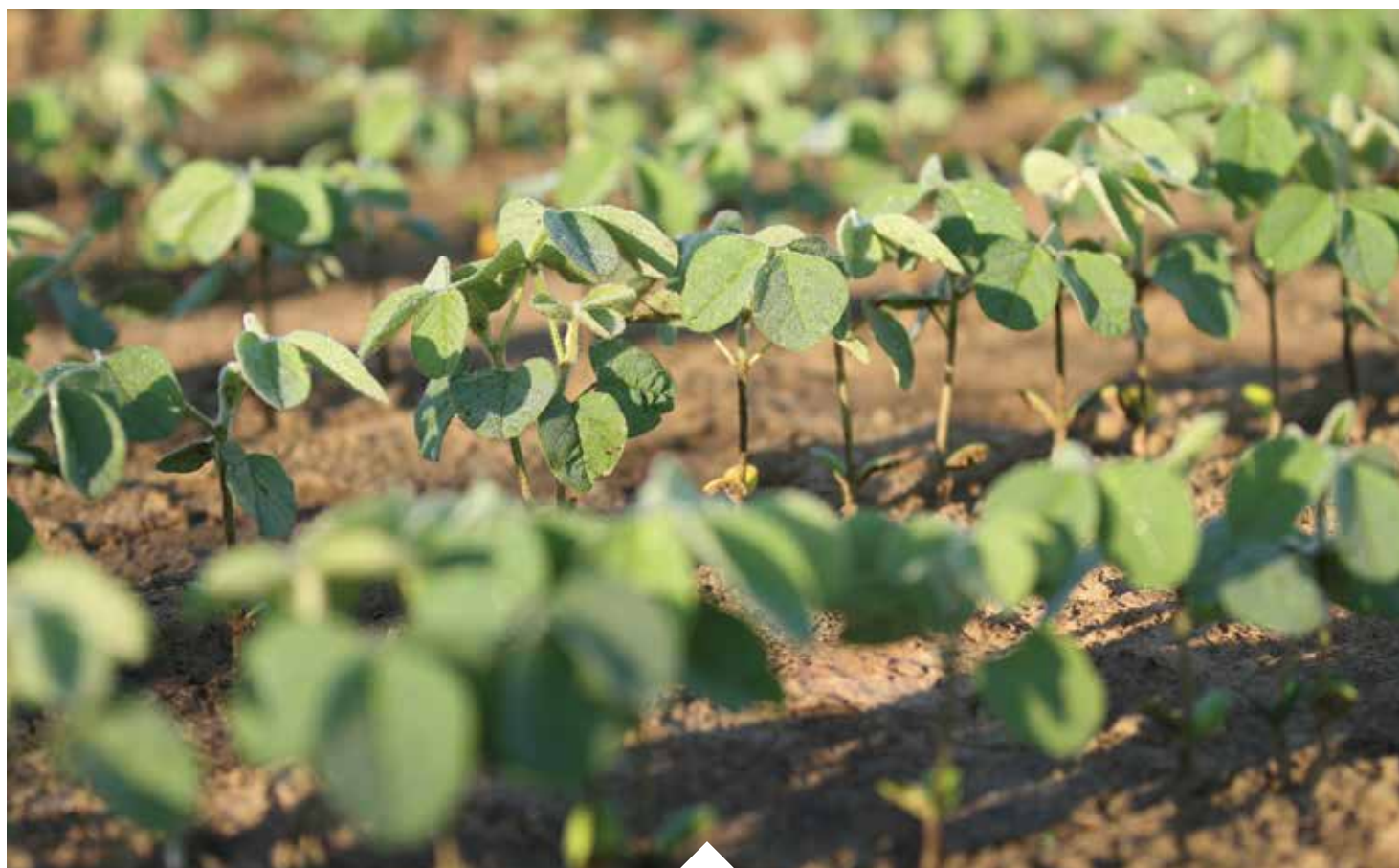
- Flows well through planter
- Wide range of pH compatibility
- Provides better plant health and improved yields
- Increased early vigor of seedlings to help outgrow insect and disease pressure



2018 ORGANIC SOYBEANS

Brand	Maturity	HP Soil	MP Soil	LP Soil	Poorly Drained Soil	Plant Height	Summer Canopy	Pubescence	Pod Color	Seeds/ Pound	Hilum	Phytophthora Resistance	Sudden Death Syndrome	Brown Stem Rot	White Mold Rating	Cyst Nematode
GH232	2.3	E	E	NR	G	Medium	Medium	Lt. Tawny	Tan	2,800	Black	Rps1-a	7	7	6	MR3
GH291	2.9	E	E	E	E	Medium Tall	Bushy	Gray	Brown	2,800	Imp. Black	Rps1-c	7	5	6	R3, MR14
GH327	3.2	E	G	NR	G	Medium Tall	Bushy	Gray	Brown	2,400	Yellow	None	6	6	7	Susceptible
GH330	3.3	G	E	E	E	Medium Tall	Medium	Gray	Brown	2,700	Buff	Rps1-c	8	8	6	R3, MR14
GH350	3.5	E	E	E	E	Medium	Medium	Gray	Brown	2,700	Buff	Rps1-c	8	7	6	R3, MR14
GH380	3.8	E	E	E	E	Medium	Bushy	Lt. Tawny	Brown	2,900	Black	Rps1-c	8	7	5	R3, MR14
GH389N	3.8	E	E	E	G	Medium	Medium	Tawny	Brown	2,900	Black	Rps1-a	7	6	6	R3, MR14

■ = NEW Column Rating: 9 = Best (-) = Not Rated NR = Not Recommended E = Excellent G = Good
 HP = High Productivity MP = Medium Productivity LP = Low Productivity



CERTIFIED ORGANIC SOYBEANS

GH232 RM: 2.3

GH232 provides “racehorse” type yields on average to high productivity soils. It has excellent emergence and vigor. Plant GH232 at medium populations across any row width. With its great standability and early emergence, it’s sure to be a winner in your field.

SPECIAL CHARACTERISTICS

- Very Good Frogeye Tolerance
 - Charcoal Rot / Very Good Stress Tolerance
 - Early Vigor and Excellent Emergence
-

GH291 RM: 2.9

GH291 offers yield and versatility across all soils. Its medium tall, wider plant style shades the row quickly. This soybean also fits the food-grade premium market with its higher protein and dark hilum.

SPECIAL CHARACTERISTICS

- C-Gene for Phytophthora Resistance
 - Very Strong for Sudden Death Syndrome
 - Works Across All Soil Types
-

GH327 RM: 3.2

GH327 is an excellent product for the organic, clear hilum food-grade market. It has solid agronomics and good standability. For top premiums, use GH327 to gain the most profitability per acre.

SPECIAL CHARACTERISTICS

- Solid Agronomics
 - Excellent Seedling Emergence
 - Best on High and Medium Soils
-

NEW GH330 RM: 3.3

GH330 has good stress tolerance and performs in medium productivity soils. It delivers strong agronomics and very good tolerance to Brown Stem Rot and Sudden Death Syndrome, plus Phytophthora field tolerance with the C-gene to protect yield.

SPECIAL CHARACTERISTICS

- Strong on Sudden Death Syndrome
 - Excellent against Brown Stem Rot
 - Very Good Phytophthora Package
-

NEW GH350 RM: 3.5

GH350 performs well across yield levels. It delivers in lower productivity environments and it has top-end yield on more productive soils. GH350 has a strong emergence package and stands very well at harvest, with great versatility across the acres.

SPECIAL CHARACTERISTICS

- Works Across Various Soils
 - Strong Sudden Death Syndrome Tolerance
 - Very Good Standability
-

NEW GH380 RM: 3.8

GH380 is a top-end yielder that is quick out of the ground in the spring. This variety has very good Sudden Death Syndrome tolerance and a strong Phytophthora package to support its yield potential. GH380 is a medium variety for height and carries more canopy width.

SPECIAL CHARACTERISTICS

- Strong Emergence
 - Sudden Death Syndrome Tolerance
 - Wider Canopy
-

GH389N RM: 3.8

GH389N has a great package of agronomic characteristics that make it a farmer favorite. GH389N is a yield leader with excellent stress tolerance, making it a winner across soil types. This soybean variety is a versatile performer that will anchor our full-season lineup.

SPECIAL CHARACTERISTICS

- Cyst + A-Gene for Phytophthora Resistance
- Performs Across All Soil Types
- Solid Defensive Package

2018 ORGANIC WHEAT

Brand	Relative Maturity	Double Crop	15 in. Row Adaptability	Plant Height	Standability	Tillering	Straw Yield	Winterhardiness	Head Scab	Test Weight	Awns
GH4088	Ultra Early	9	7	Medium	8	7	6	8	9	8	No
GH4113	Medium Early	9	5	Medium Short	9	7	7	8	8	8	No
GH4125	Medium	8	8	Medium Tall	9	8	8	8	7	9	Yes

■ = NEW Column Rating: 9 = Best

CERTIFIED ORGANIC WHEAT

GH4088 Early Maturity

GH4088 is an excellent yielder with great tillering to out-compete weeds. This extremely early maturity variety adds yield while maintaining standability, winterhardiness, and high test weight coupled with scab tolerance. GH4088 opens new opportunities for double cropping in the northern region.

SPECIAL CHARACTERISTICS

- Great Double Cropping Opportunity
- Extremely Early Variety
- Tremendous Standability
- Excellent Scab Tolerance

GH4113 Medium-Early Maturity

GH4113 is an outstanding yielder. Its medium-early maturity, great standability, and excellent plant health and test weight make it a perfect combination for organic farmers across a wide geographic region. Plant GH4113 and experience a whole new level of yield and performance in your organic wheat fields.

SPECIAL CHARACTERISTICS

- Organically Certified Soft Red Winter Wheat
- Extremely High Yield Potential
- Excellent Straw Yields
- Fast Dry Down

GH4125 Medium Maturity

GH4125 is a dominant yielder. It combines tremendous yield with test weight, health and standability. With a gorgeous look at harvest time, GH4125 will be a medium maturity farmer favorite.

SPECIAL CHARACTERISTICS

- Dominant Yielder
- Excellent Test Weight
- Incredible Standability
- Great Plant Health

General Seeding Rates For Organic Wheat

Seeding Method	Seeds/A.	Approx. lb./A.*
Conventional-Till	1,400,000	105-120
No-Till	1,600,000	110-125
Spreader	1,700,000	130-140

For late seeding, increase rates by 15 percent.

*Adjust lb./A. for different seed size:

Example: 13,000 seeds/lb. x 120 lb./A. = 1,560,000 seeds/A.

2018 GENERAL INFORMATION

SEED ORDERS

- All seed orders must be placed directly with Great Harvest Organics or an authorized Great Harvest Organics dealer.
- No returns allowed on certified organic seed purchases.

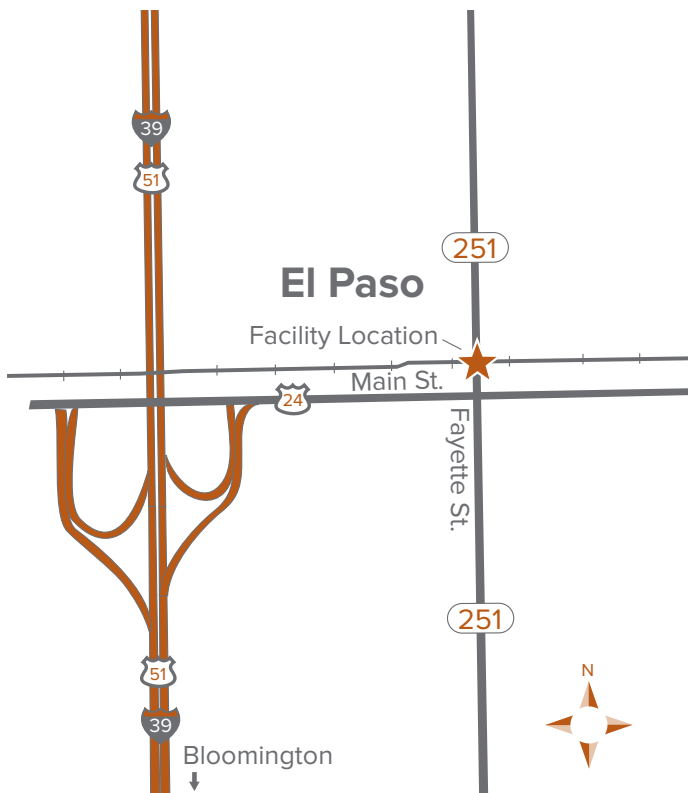
INVOICING

- Courtesy pre-billings will be sent prior to January 10, 2018 for those customers wanting to receive the 8 percent cash discount for early payment. **Note:** This is an order acknowledgment and pre-billing only, not an order confirmation.
- Prices are subject to change without notice.

SHIPPING / PICKUP

- Orders will be shipped at the customer's request. Please call 309.533.7197 when you are ready for your seed to be shipped. Please allow for transit time.
- Seed may be picked up between 8 a.m. and 5 p.m., Monday through Friday with seasonal hours on Saturdays.

PICK UP LOCATION



SEED CAN BE PICKED UP AT:

Beck's El Paso Facility
90 N Fayette St.
El Paso, IL 61738

**PLEASE CALL 24
HOURS PRIOR TO ANY
SEED PICKUP.
309.533.7197**

2018 SEED PRICING

PRICING FOR CERTIFIED ORGANIC CORN, CERTIFIED ORGANIC SOYBEANS, AND NON-GMO CORN.

Certified Organic Corn	Certified Organic Soybeans	Non-GMO Corn
\$269.90/Unit (80,000 Seed Count)	\$51.50/Unit (130,000 Seed Count)	\$239.90/Unit (80,000 Seed Count)
GHO 43A2	GH232	4323
GHO 47N2	GH291	4721
GHO 41M8	GH327	5234
GHO 52F3	GH330	5140
GHO 55G3	GH350	5840
GHO 55E4	GH380	6225
GHO 58E4	GH401	6365
GHO 59R5		
GHO 62B3		
GHO 63T1		
GHO 75C6		

SEED UNIT DESCRIPTION

Grade Size	LR 60 Large Rounds	LR Large Rounds	LF Large Flats	MR Medium Rounds	MF Medium Flats
Approximate Kernels	60,000	80,000	80,000	80,000	80,000
Approximate Weight Per Unit	58-70 lb.	59-69 lb.	57-69 lb.	46-59 lb.	40-57 lb.
Approximate Seeds/lb.	1034-857	1356-1159	1403-1159	1739-1356	2000-1403
Pricing	List Price Less \$60.00	List Price See Charts Above			

Visit GreatHarvestOrganics.com for more resources and information.

2018 DISCOUNTS AND INCENTIVES

PURCHASE DISCOUNTS

Early Order Deadline

Corn	\$10.00/unit	November 15, 2017
Soybeans	\$1.00/unit	November 15, 2017

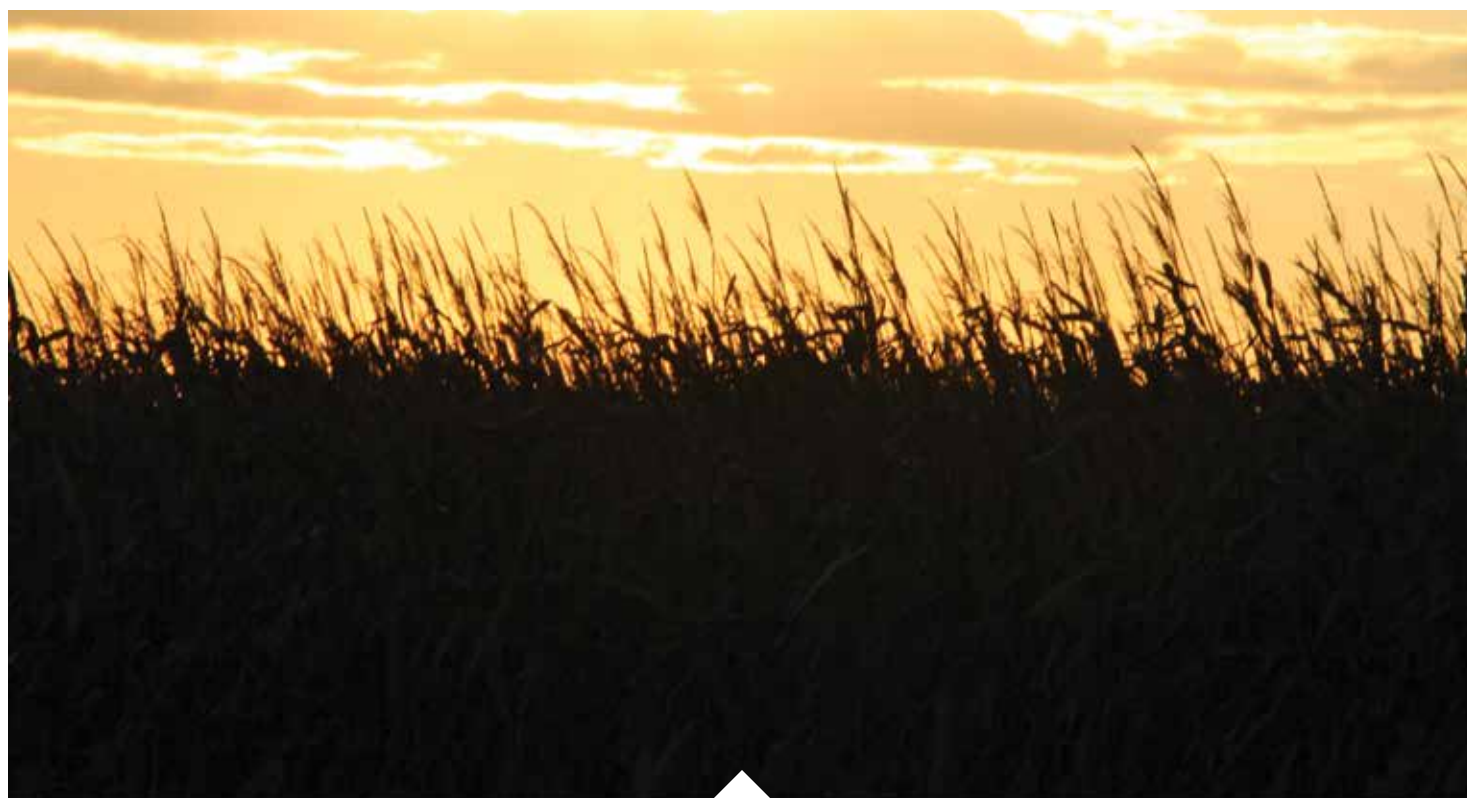
Volume Discounts

Volume	Corn	Soybeans
6-20 Units	\$2.00/unit	\$0.50/unit
21-60 Units	\$4.00/unit	\$1.00/unit
61-100 Units	\$6.00/unit	\$1.50/unit
101-150 Units	\$8.00/unit	\$2.00/unit
151-200 Units	\$10.00/unit	\$2.50/unit
201+ Units	\$12.00/unit	\$3.00/unit

Early Order Deadline

**Place your order by
November 15, 2017**
(to receive per unit discount)

Call **866.834.7888** to place your Great Harvest Organics order.



2018 TERMS AND POLICIES

CASH PAYMENT DISCOUNTS FOR ORGANIC SEED CORN AND SOYBEANS

The cash discount schedule is authorized on all current seed payments received during the following time periods.
(All checks sent by mail must be postmarked by the deadline date.)

8%
Until Jan.10, 2018

6%
Jan. 11 through
Feb. 28, 2018

2%
March 1 through
May 31, 2018

0%
Terms through Nov. 15, 2018
with pre-approved credit
arrangements.

PAYMENT TERMS

- All seed purchases are due prior to seed shipment. **Exception:** Seed customers may apply for November 15, 2018 financing terms. Contact Great Harvest Organics for a credit approval form.
- All seed accounts that are unpaid as of August 1, 2018 will be charged a 1.5 percent per month carrying fee based on the unpaid balance, which is equivalent to an 18 percent annual percentage rate.
- Previous year seed accounts must be paid in full prior to shipments of current year products to any customer.
- John Deere Financial, Discover, VISA, Mastercard and American Express are accepted.

REPLANT POLICIES

- Great Harvest Organics offers a 100% Free Replant policy on certified organic and non-GMO corn.
- Replant seed is subject to availability and will be offered subject to evaluation.

Great Harvest Organics products are organically certified during production, processing and final distribution. Our aim is to establish long-term relationships with customers by consistently providing superior organic seed products. Our seed products are specially selected for the traits that enable them to perform in organic conditions.

STAY CONNECTED.



Twitter: @GreatHarvestOrg

Facebook: Great Harvest Organics

Web: GreatHarvestOrganics.com

Great Harvest Organics is a member of, or affiliated with, the following organizations:

Organic Trade Association (OTA)
Organic Materials Review Institute (OMRI)
American Seed Trade Association (ASTA)

Indiana Crop Improvement Association (ICIA)
Association of Official Seed Certifying Agencies (AOSCA)
International Certification Services, Inc. (ICS)





6803 E. 276th St. Atlanta, IN 46031

ORDERS: 317.984.6685 or 866.834.7888 | SHIPPING: 309.533.7197

GreatHarvestOrganics.com